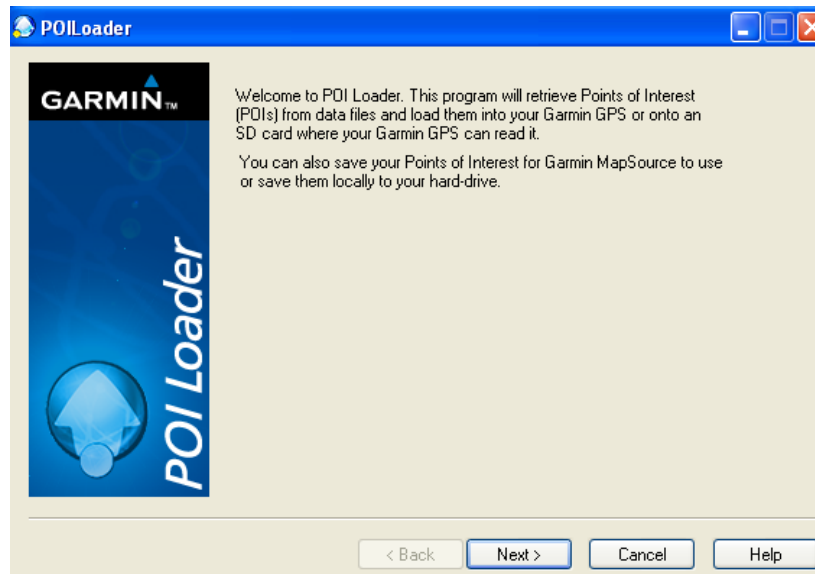


Guide for Loading POIs into your Garmin GPS Device

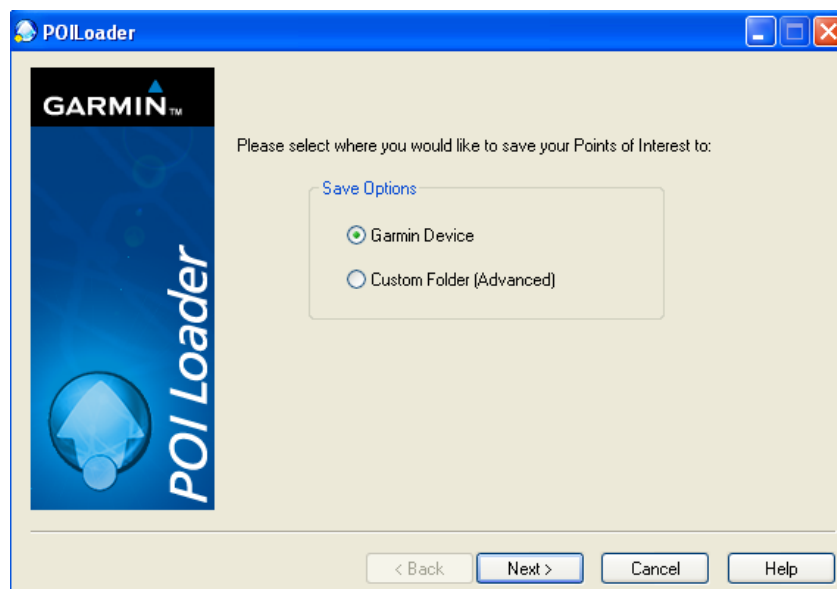
Congratulations! You are about to have the latest technology for locating E85 (85% ethanol, 15% gasoline) stations. Once loaded, these POIs will act just like your existing POIs in other categories. When you need E85, simply select “extras” and the data file you would like to pull from.

If you do not have Garmin’s POILoader already installed on your computer, please navigate your browser to the following: <http://www8.garmin.com/products/poiloader/> Once on this website, simply click download, and choose Mac or PC.

Once the POILoader is installed, run the program. The first window you should see is below. Click NEXT to advance.



The next window to open will be the below, choose GARMIN DEVICE and click NEXT:



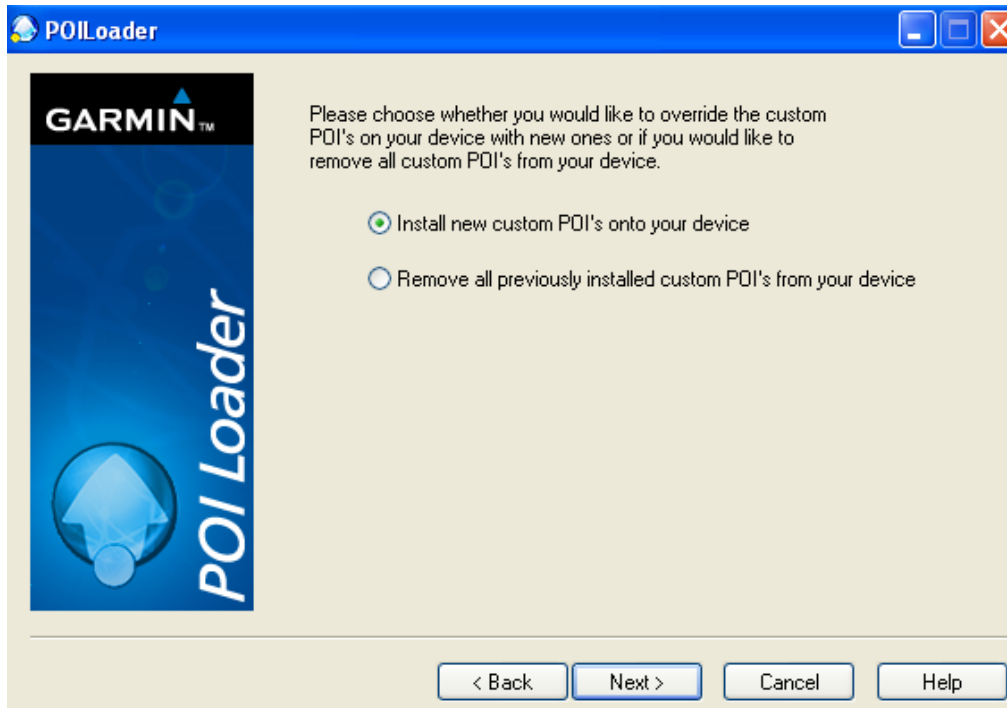
Make sure that your Garmin is connected to your computer. If the program does not recognize your Garmin, and you see the below screen, click the button that says, FIND DEVICE.



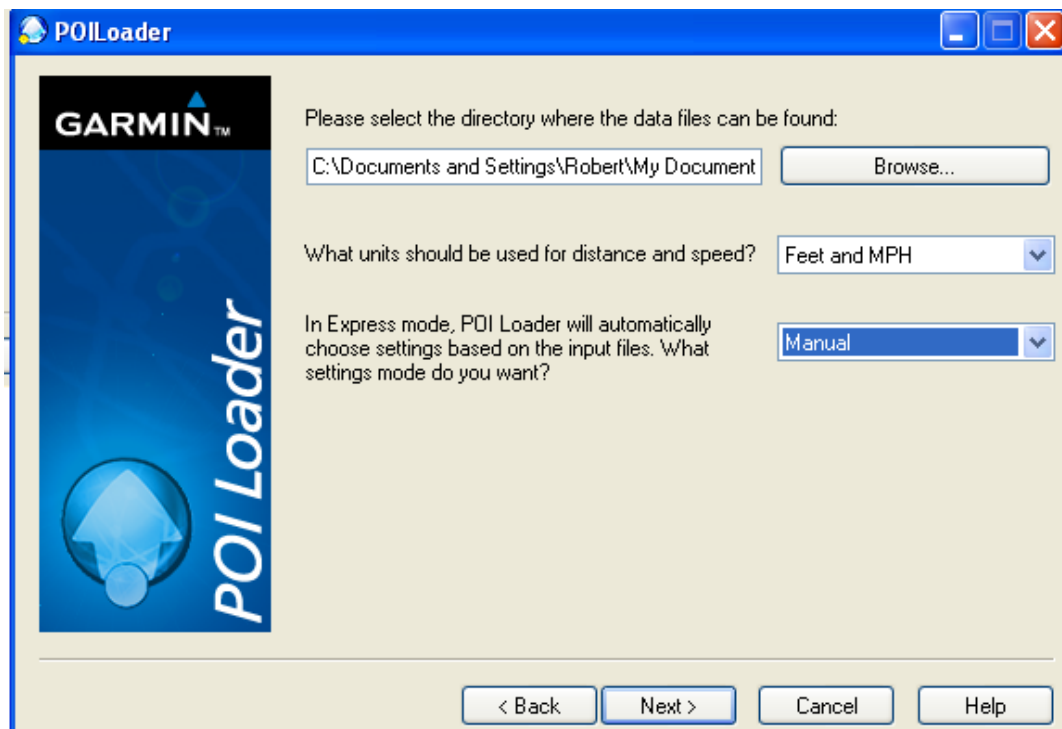
Once the POILoader has located your Garmin device, it should look similar to the below window. Click NEXT to proceed.



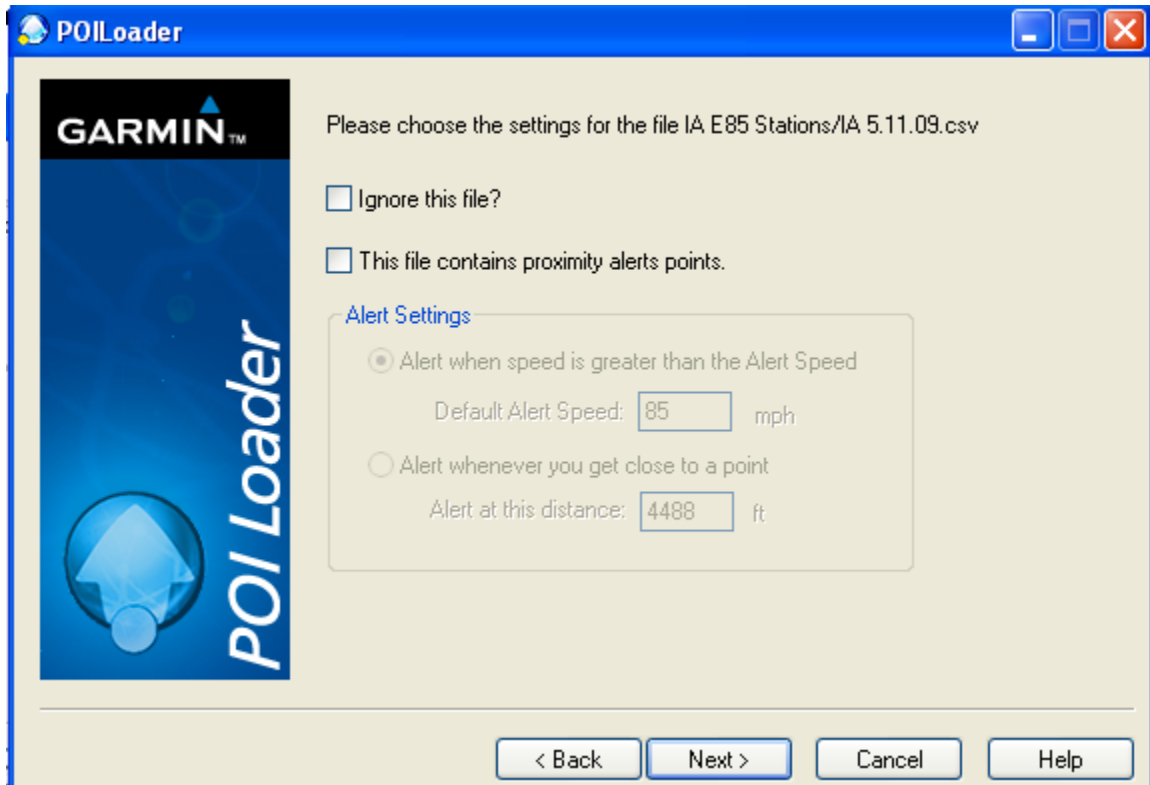
The next window should be the one below. Click the first selection, INSTALL NEW, and then click NEXT.



The next window is important. The first part is to locate your data on your computer. Click "BROWSE" to locate your "GPS Data" file folder. This is the file that you want. Simply click on the file, and hit "OK" – do not click on one of the sub-folders. The next should read "FEET AND MPH" and then you should select "MANUAL" and hit NEXT.



You will have to answer these two questions for every file you have ready for upload. Leave both of these boxes unchecked. Do not check these boxes.



You may receive an error message that states that after a certain line, data cannot be read. This is an unfortunate glitch in the system, but no needed data is beyond that point in the database. Simply click OK, if you have that problem.

When finished, unplug your Garmin from your computer and remove the battery. Let the unit sit idle for 10 seconds, then replace your battery. When the unit turns on, all of your information you just loaded should be available. If you do not locate it directly in POIs, look in your EXTRAS folder on your screen.

Enjoy!